



2025-27

Sixth Form Prospectus





Welcome

Welcome to The South Wolds Academy Sixth Form

Thank you for your interest in South Wolds' Sixth Form. We are a small Post-16 centre offering an academic curriculum of around 26 different A Level subjects including an Arts Pathway. We are small in size but big in terms of the opportunities, experiences and personal support that we offer to our students. As a Post-16 team we feel very privileged and proud to be working with students at this key stage of their education and supporting them on their journey through A Level study on to university or the world of work.

During Year 11 you may feel under great pressure to make a decision about your plans for Post 16 Education. It is important that you make the right choice for you. Choosing to continue your education at The South Wolds Academy Sixth Form is a positive choice. Selecting the right programme of study or combination of courses can be extremely difficult, especially if you do not have any clear ideas about your future aspirations, but there is still much for you to consider at this stage to make your final choice of courses well informed.

For a start, you should talk to your subject teachers and personal tutor over the coming weeks. Aim to get a realistic assessment of what you are likely to achieve in the final examinations and match them with the range of Post 16 courses on offer. Also bear in mind the entry qualifications for a range of courses at Higher Education (University) or for job applications because this will influence your combination of Post 16 courses.

To study on the A Level Pathway you must achieve at least six GCSE passes, two at Grade 6 or above and four at Grade 5 or above (The South Wolds Academy Policy 2024/25).

In order to study Maths or Science A Level you must have achieved at least a GCSE Grade 6 in Sciences and a Grade 6 in Maths.

Over the coming months we will be taking the opportunity to talk to you before the GCSE examinations and during an intensive induction programme after the examinations, to help and guide you onto the appropriate courses.

As a general rule, students will be expected to undertake three A Level courses in Year 12, continuing these A Level courses in to Year 13. Core Maths AS Level or Further Maths A Level may be studied in addition to this. The selection of four subjects may be considered for some students.

At the head of each subject entry you will find guidance about the qualifications necessary to gain entry to each course. These may vary from subject to subject but due consideration will be given to all students on individual merit.

Students entering The South Wolds Academy Sixth Form from other institutions must provide proof of their GCSE or GCE Applied qualifications before embarking on the courses.

If you are studying any of the courses listed below, and you are not studying A Level Maths, we highly recommend you select AS Core Maths as an option:

Biology, Business, Chemistry, Computer Science, Economics, Physics, Product Design or Psychology

If you have any questions please contact Mrs Capewell, KS5 Senior Performance Leader
jcapewell@southwolds.uk



Especially for our creative students...

The Art & Design Pathway

The Art and Design Pathway is a perfect course for anyone who is creative and looking to study an Art and Design based subject at university (graphic design, illustration, photography, textile design, interior design, fashion etc.)

We are able to offer students a mini art foundation, by allowing them to study 3 (or 4) Art and Design based A Levels.

The subjects we may offer are*:

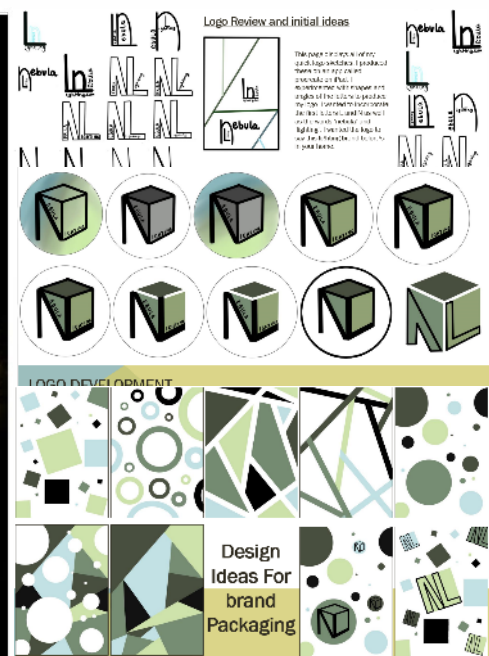
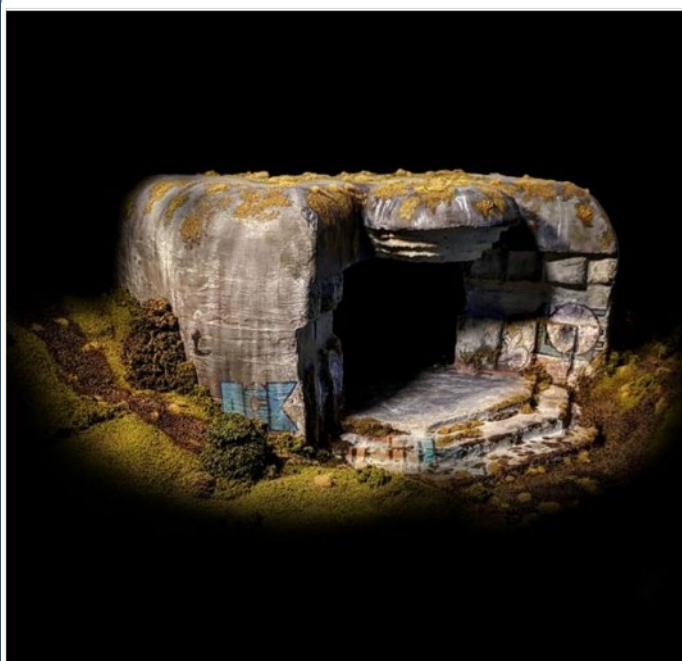
- Fine Art (which includes drawing, sculpture, painting and digital arts)
- Graphic Communication (which includes commercial graphic design and graphic illustration)
- Photography (which includes animation and film making)
- Art Textiles (which includes fashion and printmaking)
- Product Design

*Subjects will only run if they attract sufficient candidates to be viable

The entry criteria for this pathway is different to our usual sixth form entry requirements. We ask for a Grade 6 or above in an Arts subject and 5 further GCSE passes at Grade 4 and above, including English and Maths. (A grade 6 or above in product design will be accepted to study graphics and product design)

It is worth noting that you are also able to study one or two of our Art and Design subjects alongside our other A Level subjects if you would like to, so for example you may like to combine Computer Science and Maths with an Art and Design subject in order to pursue a Computer Games Design degree.

If you know what you'd like to do in the future, research some degrees to see what qualifications you may need. If you just love doing creative subjects, choose our A Levels and then let them lead you to your future pathway! All of our Art and Design subjects consistently achieve outstanding results, so you are very safe in our hands!





Fine Art

ART & DESIGN: Fine Art

Qualification studied for: A Level

Length of course: Two years

Examining body: AQA

Entry requirements to this course:

At least a Grade 6 in GCSE Art is desirable.

What will I study?

Year 1 You will spend the year developing key skills in a range of media (painting, drawing, printmaking, mixed media and digital work). You will then develop your preferred media into small focused projects. You will learn how to make relevant connections to the work of others. Essentially this is the development year in preparation for the A Level in year 2. Year 2 Component 1: Personal investigation This is a practical investigation supported by written material. The investigation will be a coherent, in-depth study developing a sustained investigation from an initial starting point to a final realisation. The written element is a structured response of between 1000 and 3000 words. Component 2: Externally set assignment You will choose one of the exam board's externally set questions and develop this into a body of work. Following the preparatory period you will complete a fifteen hour exam.

How will I be assessed?

Assessment is marked against AQA's marking criteria. Portfolio is 60% and the externally set assignment 40% of your final grade.

Areas of study within Fine Art:

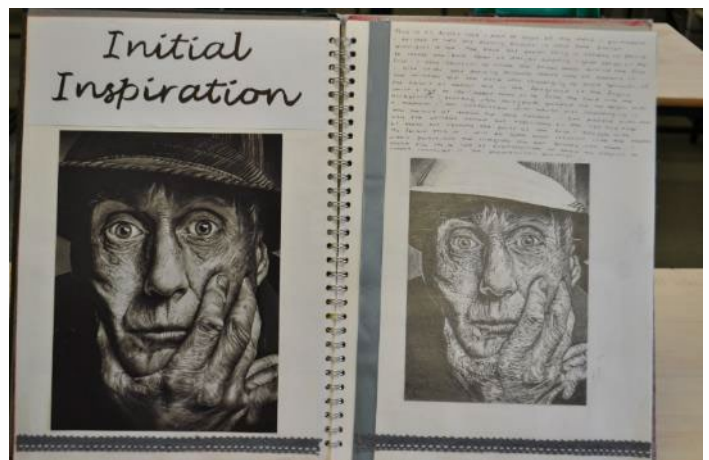
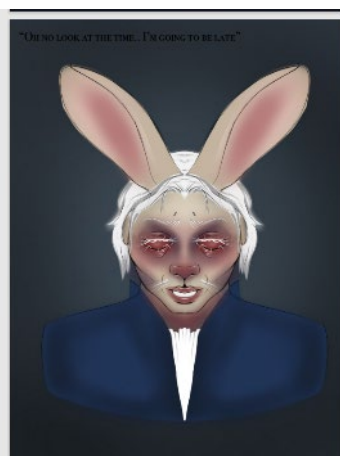
- Drawing and painting
- Mixed-media, including collage and assemblage
- Sculpture
- Ceramics
- Installation
- Printmaking
- Moving image and photography.

You will have your own studio space in the Sixth Form Art Studio. You will work in your studio during lessons. It will also be available for your use during personal study.

Career paths:

Fine Artist, Craft Artist, Architect, Art Director, Arts Therapy, Curator, Costume Design, Fashion Design, Graphic Design, Illustration, Interior Design, Landscape Design, Model Making, Photography, Web Design, Animation and Motion Picture, Automotive Design, Ceramicist, Product Design, Visual Merchandising, Teaching, Advertising, Sculptor, Jewellery Design, Art Historian, Set Designer, Make Up Artist and Furniture Design.

For further information please contact: Mr Jackson kjackson@southwolds.uk





Graphic Communication



ART & DESIGN: Graphic Communication

Qualification studied for: A Level

Length of course: Two years

Examining body: AQA

Entry requirements to this course: At least a Grade 6 in GCSE Art or a D&T subject is desirable.

What will I study? Year 1 We believe that the most important quality you need to develop is your creativity. The course covers a broad range of traditional techniques including drawing and visualising, painting and mixed media. The use of typography is integral to all projects, either hand rendered or computer generated. Professional graphics packages are used throughout the course, with a focus on Adobe Illustrator and Photoshop on this course. There will be opportunities to develop animation and Web Design skills. The course is carefully structured to develop the skills you need and then gives you more freedom to develop your strengths and interests. Students produce work ranging from mixed media illustration, even using 3D elements, to web design. The meaning and message of the work and the way that it communicates distinguishes this subject from other specialisms in art and design. Year 2 Component 1: Personal investigation This is a practical investigation supported by written material. The investigation will be a coherent, in-depth study developing a sustained investigation from an initial starting point to a final realisation. The written element is a structured response of between 1000 and 3000 words. Component 2: Externally set assignment You will choose one of the exam board's externally set questions and develop this into a body of work. Following the preparatory period you will complete a fifteen hour exam.

How will I be assessed?

Assessment is marked against AQA's marking criteria. Portfolio is 60% and the externally set assignment 40% of your final grade.

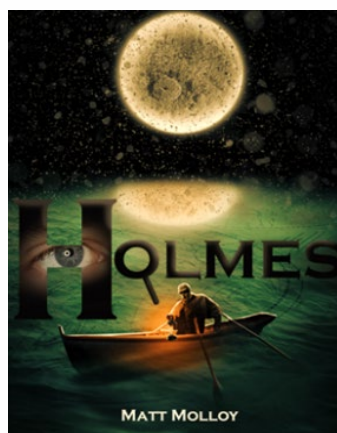
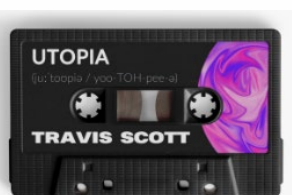
Areas of study within Graphic Communication:

- Digital Design
- Mixed-media, including collage
- Drawing and Painting
- Typography
- Packaging Design
- Web Design/Animation/Photography
- Printmaking

Career paths:

Graphic Designer, Marketing, Advertising, Art Director, Creative Director, Film and Video Editor, Arts Therapist, Curator, Fashion Design, Journalism, Illustration, Interior Design, Landscape Design, Model Making, Photography, Web Design, Animation, and Motion Picture, Automotive Design, Product Design, Visual Merchandising, Teaching.

For further information please contact: Ms Aston saston@southwolds.uk





Photography

ART & DESIGN: Photography

Qualification studied for: A Level

Length of course: Two years

Examining body: AQA

Entry requirements to this course: Grade 6 or above in GCSE Art or a similar subject is desirable

What will I study?

Year 1 You will spend the year learning how to use an SLR camera and develop your images through Photo-shop. You will learn how to make relevant connections to the work of others. Essentially this is the development year in preparation for Year 2. Year 2 Component 1: Personal investigation This is a practical investigation supported by written material. The investigation will be a coherent, in-depth study developing a sustained investigation from an initial starting point to a final realisation. The written element is a structured response of between 1000 and 3000 words. Component 2: Externally set assignment You will choose one of the exam board's externally set questions and develop this into a body of work. Following the preparatory period you will complete a fifteen hour exam.

How will I be assessed?

Assessment is marked against AQA's marking criteria. Portfolio is 60% and the externally set assignment 40% of your final grade.

Areas of study:

You will develop one or more of the following:

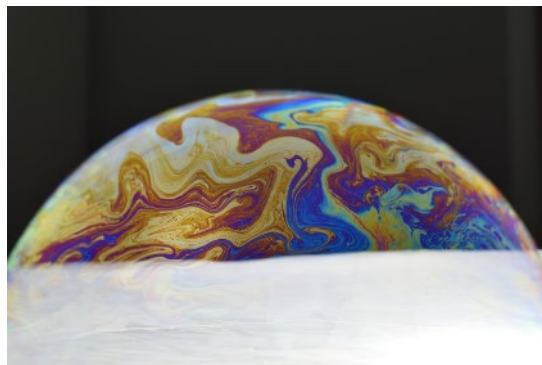
- Portraiture
- Landscape photography
- Still life
- Documentary photography
- Fashion photography
- Experimental photography
- Multimedia
- Photographic installation
- Moving image (video, film, animation)

The Art Department does have some cameras that can be provided but it is advised if at all possible to acquire your own SLR camera. This does not have to be an expensive camera; refurbished SLR cameras are an affordable alternative.

Career paths:

Photojournalism, Forensic Photography, Medical Photography, Documentary Photography, Fashion Photography, Experimental Photography, Multimedia, Moving Image (Video, Film and Animation).

For further information please contact: Mr Jackson kjackson@southwolds.uk



ART & DESIGN: **Textiles**

Qualification studied for: A Level

Length of course: Two years

Examining body: AQA

Entry requirements to this course: Grade 6 or above in GCSE Art or a similar subject is desirable

What will I study?

The qualification consists of two units. One of the units is set from a starting point of your choosing (this is essentially your coursework), you will study a range of artists and designers to inform your work. You will be introduced to a wide range of experimental processes and techniques to enable you to develop your work. You will work in a sketchbook and produce a final product; this could be anything from garments to sculpture. The second unit is essentially your exam. You will choose from one of five themes, starting themes given by the exam board. You will have your own studio space in the Sixth Form Art Studio. Throughout the course you will have the opportunity to work with Artists and Designers during workshops as well as participate on exciting trips.

How will I be assessed?

You will be assessed on your ability to develop ideas, experiment with media and processes, record your ideas in your sketch book and produce final pieces. You will be given written and verbal feedback weekly. During unit two you will attend one to one weekly meetings with your tutor to help review your work and plan what to do next.

Areas of study:

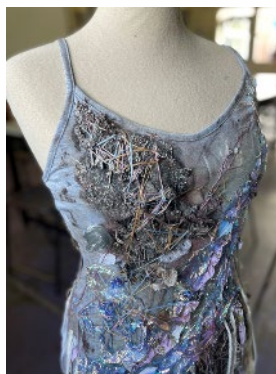
- fashion design
- fashion textiles
- costume design
- digital textiles
- printed and/or dyed fabric and materials
- domestic textiles and wallpaper
- interior design
- constructed textiles
- installed textiles.

Career paths:

An A level in Art Textiles is useful to lots of career paths a few of which are: Fashion Design, Interior Design, Costume Design, Theatre Design, Fine Artist, Graphic Design, Curator, Arts Director, Photography – including fashion, Fashion journalism, Architect, Surface designer, Textile designer, Jewellery design, Fashion buyer, Merchandising, Trend forecaster, Tattoo Artist and Teaching to name a few.

For further information please contact: Miss Giugno bgiugno@southwolds.notts.sch.uk

Art and Design : Textile Design may not run or may run under Art and Design :
 Fine Art if numbers are low.



Biology

Qualification studied for: A Level

Length of course: Two years

Examining body: AQA

Entry requirements to this course: Minimum of a Grade 6 in either GCSE Science Trilogy or GCSE Biology, plus a minimum of a Grade 6 in GCSE Maths.

What will I study?

Year 1

- ◆ Biological Molecules
- ◆ Cells
- ◆ Organisms exchange substances with their environment
- ◆ Genetic information

Year 2

- ◆ Energy transfer
- ◆ Changes in internal and external environments
- ◆ Genetics, Populations, Evolution and Ecosystems
- ◆ The control of gene expression

How will I be assessed?

Three examined units at the end of Year 2, including questions on relevant practical skills. Working towards passing the Practical Endorsement Award, a separate qualification to Biology A Level, in which your teacher will assess you over the two year course.

Career paths:

Biology has some relevance to most careers which involve either people, animals, chemicals or land. A Level Biology is widely accepted as a qualification for Higher Education. A Level Biologists frequently go on to study a variety of Biological science degrees including Biology, Biochemistry, Nursing, Forensics, Medicine, Biomedical Science, Ecology, Zoology, Veterinary Science, Sport Science, Genetics, Physiotherapy, Pharmacology and many more. In addition, the study of Biology also helps students to build up skills in research, problem solving, organisation and analytical skills.

For further information please contact: Mrs Baker lbaker@southwolds.uk





Business

Business

Qualification studied for: A Level

Length of course: Two years

Examining body: Edexcel

Entry requirements to this course: You do not need to have studied Business Studies at GCSE and you will not be disadvantaged in the slightest if you have not. On a number of occasions, the highest attaining students have been those who have not studied Business at GCSE. Students require at least a Grade 5 in Maths GCSE as the course contains a great deal of number work.

What will I study?

During the first year you will be introduced to the market, which will enable you to understand how businesses identify opportunities and to explore how businesses focus on developing a competitive advantage through interacting with customers. You will also consider 'people', exploring how businesses recruit, train, organise and motivate employees, as well as the role of enterprising individuals and leaders. You will then go on to explore the finance and operations functions and investigate external influences on business.

How will I be assessed?

At the end of year 2 you will be required to sit three exams:

Paper 1: Marketing, people and global businesses (35% of total award)

Paper 2: Business activities, decisions and strategy (35% of total award)

Paper 3: Investigating business in a competitive environment (30% of total award)

Each of the three papers are two hours long. Each paper comprises of two sections each containing one data response question broken down into a number of parts, including one extended open-response question. Paper 3 is synoptic, so will therefore assess content across all themes of the A Level course. Paper 3 is based on a pre-released context. The context will focus on a broad area, such as an industry or market in which businesses operate. A new context document will be issued to the school each year. Students will be able to research the context prior to the exam, but will not be allowed to take any of their research data into the examination.

Career paths:

It will provide you with one of your three A Level requirements for entry onto a university degree course. It will also substantially help with any management aspirations in business such as Finance, Marketing, Human Resources or Operations. Alternatively, you will have received the basic skills required to set up and run your own small business.

For further information please contact: Mrs Spencer sspencer@southwolds.uk





Chemistry

Chemistry

Qualification studied for: A Level

Length of course: Two years

Examining body: AQA

Entry requirements to this course: Minimum of a Grade 6 in either GCSE Science Trilogy or GCSE Chemistry, plus a minimum of a Grade 6 in GCSE Maths.

What will I study?

The work covered not only builds on the GCSE content you have already studied but also adds on a significant step up in both content and theoretical understanding. Topics covered include: Atomic structure, Amount of substance, Bonding, Energetics, Kinetics, Chemical equilibria, Le Châtelier's principle and K_c , Oxidation, Reduction and Redox equations, Thermodynamics, Rate equations, Equilibrium constant K_p for homogeneous systems, Electrode potentials and Electrochemical cells, Acids and bases, Periodicity, Group 2, The alkaline earth metals, Group 7(17), The halogens, Properties of Period 3 elements and their oxides, Transition metals, Reactions of ions in aqueous solution, Introduction to organic chemistry, Alkanes, Halogenoalkanes, Alkenes, Alcohols, Organic analysis, Optical isomerism, Aldehydes and ketones, Carboxylic acids and derivatives, Aromatic chemistry, Amines, Polymers, Amino acids, proteins and DNA, Organic synthesis, Nuclear magnetic resonance spectroscopy, Chromatography.

How will I be assessed?

Three exams at the end of year 2: Paper 1 covers inorganic chemistry; Paper 2 covers organic chemistry; Paper 3 is a mixed exam covering all topics with a multiple choice section. Also a separate practical endorsement based upon practical work done in class, and assessed by the teacher. Full details can be found at:

<https://www.aqa.org.uk/subjects/science/as-and-a-level/chemistry-7404-7405/specification-at-a-glance>.

Career paths:

Medicine, Research, Engineering and Forensics, plus many more. Chemistry students are highly prized in many varied careers due to the demands of the course and the problem solving ability of successful students.

For further information please contact: Mrs Metters cmatters@southwolds.uk





Computer Science

Computer Science

Qualification studied for: A Level

Length of course: Two years

Examining body: OCR

Entry requirements to this course: Recommended for those who have studied GCSE Computer Science, and are strong candidates in Maths and the Sciences. Computer Science complements Maths and Science A Level options. If you are unsure please speak to Mrs Rowe.

What will I study?

Computer Systems

- Characteristics of processors, IPOS devices
- Software and software development
- Exchanging data
- Data types, data structures and algorithms
- Legal, moral, cultural and ethical issues

Algorithms and Programming

- Elements of Computational Thinking
- Problem solving and programming
- Algorithms to solve problems and standard algorithms

Programming Project

- Analysis, Design, Development and Evaluation

How will I be assessed?

Assessed via two examinations (both 2.5 hours each) and a computing project.

Career paths:

Employers are interested in both the technical and the non-technical skills gained during the Computer Science course. Many students progress to university to study similar degrees, but computational thinking skills and applications are useful for a variety of degrees. Jobs directly related to the degree include: Database Administrator, Games Developer, Information Systems Manager, IT Consultant, Multimedia Programmer, Network Engineer, Systems Analyst and Systems Developer. Jobs where the degree would be useful include: Geographical Information Systems Officer, IT Sales Professional, IT Trainer, Secondary School Teacher and Technical Author.

For further information please contact: Mrs Rowe arowe@southwolds.uk





Drama and Theatre

Drama and Theatre

Qualification studied for: A Level

Length of course: Two years

Examining body: Edexcel

Entry requirements to this course: GCSE Drama is helpful (Grade 6 or higher) but by no means essential. At least a Grade 6 in English would also be a good indicator of suitability for the written elements of the course. Most important is an enthusiasm for performance.

What will I study?

Component 1 - Devising (40% of the qualification)

In this component you will devise and perform an original piece of theatre. You will use a piece of text and a theatre practitioner as your stimulus. There is a free choice on both text and practitioner. You can work as a performer or a designer.

Component 2 - Text in Performance (20% of the qualification)

In this component you will perform a key extract from a text. You will also perform a monologue/duologue from another text. Design options are available for this component.

You have a free choice of text.

Component 3 - Theatre Makers in Practice (40% of the qualification)

In this component you will study two complete texts and a variety of live theatre. Texts will be studied practically in lessons.

How will I be assessed?

Component 1: Internally assessed and externally moderated. You will be assessed on your performance in the final piece (or your design realisation) and a portfolio that documents the process you went through. This can be written, verbal (recorded) or a combination of the two.

Component 2: You will be assessed on your performance and the completion of a written performance/design realisation. This component is assessed externally by a visiting examiner.

Component 3: This component is assessed through a written exam. In the exam you will answer questions on the staging and interpretation of the text from the point of view of director, performer and designer. There is also a question that requires you to evaluate a piece of live theatre that you have seen during the course.

Career paths:

Those interested in careers in the multi billion pound creative industries will clearly benefit from studying Drama and Theatre. However most of the skills that you will develop during the course are applicable to almost any career - communication skills, adaptability, working with others, emotional intelligence, reasoning, appraisal and evaluation, empathy and public speaking to name but a few.

For further information please contact: Mr Askham oaskham@southwolds.uk





Economics

Economics

Qualification studied for: A Level

Length of course: Two years

Examining body: AQA

Entry requirements to this course: 15% of the assessment for A Level Economics is mathematical so a firm grasp of Maths is helpful and at least a Grade 5 at GCSE is desirable.

What will I study?

Economics is the study of the issues caused by infinite human desires in a world of scarce and diminishing resources. How do we decide who gets what and when? Who are the winners and who the inevitable losers?

This course will enable students to interpret for themselves the events, issues, and policies seen in the news every day.

How will I be assessed?

- Paper 1 - Assessing theme 1 and 3, a 2 hour paper which is 35% of final grade
- Paper 2 - Assessing theme 2 and 4, a 2 hour paper which is 35% of final grade
- Paper 3 – Assessing all themes, 30% of final grade

Career paths:

Economics graduates are the highest paid apart from medical graduates. Economics will give you the ability to explain complex data in easily understandable terms to different audiences and make you highly marketable. You will be a dab hand at mathematical and statistical analysis, problem solving and time management. These are skills worth having.

Apart from banking and accountancy, the civil service recruits numerous economists. Economic theory is often applied to better understand crime, educational achievement and wider social trends. Working for charities, public bodies and think tanks are viable career choices. In addition, economics is a well-respected academic discipline that qualifies you for all general graduate programmes.

For further information please contact: Mr Wall mwall@southwolds.uk





English Language

English Language

Qualification studied for: A Level

Length of course: Two years

Examining body: AQA

Entry requirements to this course:

- At least a Grade 6 in GCSE English Language is desirable.
- A keen interest in words and language.
- A willingness to undertake independent study and research.
- An enjoyment of writing.
- A positive work ethos and commitment to learning.

What will I study?

- Textual variations and representations
- Children's language development
- Language diversity
- Language discourses
- Writing skills
- Language investigation
- Original writing

How will I be assessed?

2x2 ½ hour examinations (each one is 40% of the A Level). Language in Action - coursework: language investigation and original writing (3500 words: 20% of A Level).

Career paths:

Creative writing, Researcher, Media, Journalism, Publishing, Advertising, Education. English Language is a useful foundation subject for careers in areas such as Law, Retail, Civil Service and other public sector professions.

For further information please contact: Ms Shaw sshaw@southwolds.uk





English Literature

English Literature

Qualification studied for: A Level

Length of course: Two years

Examining body: AQA

Entry requirements to this course:

- At least a Grade 6 in GCSE English Language and Literature is desirable.
- A passion and enthusiasm for reading literature across the genres of prose, poetry, drama and non fiction.
- A willingness to discuss ideas about texts and explore interpretations of texts with others.
- An interest in the influences on writers throughout time.
- A positive work ethos and commitment to learning.

What will I study?

Love through the ages: One Shakespearean play, one prose text and a collection of poetry.
Texts in shared contexts: study of texts from modern times across prose, poetry and drama.
Independent critical study: texts across time, coursework essay exploring two texts of own choice.

How will I be assessed?

A 3 hour examination (40% of A Level). A 2 ½ hour examination (40% of A Level).
Independent critical study - coursework essay (2500 words: 20% of A Level).

Career paths:

Education: teaching in schools and colleges or abroad. Media: journalism and publishing. Information services such as librarians and archivists. English Literature is a useful foundation subject for careers in areas such as Law, Retail, Civil Service and other public sector professions.

For further information please contact: Ms Shaw sshaw@southwolds.uk





EPQ

EPQ

Qualification studied for: Level 3 (equivalent to half an A Level)

Length of course: One year

Examining body: AQA

Entry requirements to this course: At least a Grade 6 in GCSE English Language is desirable. The Extended Project Qualification is an A-Level standard qualification designed to extend and enhance your abilities beyond the A-Level syllabus and prepare for university or your chosen career. The Extended Project Qualification is a greatly beneficial but demanding course. A good level of literacy is required alongside an ability to complete an extended piece of writing and an enthusiasm to research widely and independently.

What will I study?

The EPQ allows you to lead your own project. You get to plan and carry out research on a topic that you have chosen. You can take inspiration from something touched on in class or something personal and unrelated to your studies. You then use this research to produce a 5000 word written report.

What skills will I develop?

- Thinking critically, being a reflective and independent learner
- Decision making and problem solving skills
- Planning, research, analysis, synthesis, evaluation and presentation skills
- Demonstrate creativity, initiative and enterprise
- Referencing and writing academically

Undertaking an EPQ can also deliver other benefits for students, such as:

- Improved A Level performance
- Receive lower offers from some universities
- Something to discuss in university interviews and personal statements

For further information please contact: Miss Gale vgale@southwolds.uk





French

French

Qualification studied for: A Level

Length of course: Two years

Examining body: AQA

Entry requirements to this course: You need to be predicted at least a Grade 6 in French, if you achieve a Grade 5 in the results please talk to your French teacher.

What will I study?

Year 1

Aspects of French speaking society – family, cyber society, voluntary work

Artistic culture in the French speaking world – music and cinema

Study of a film

Grammar and vocabulary

Year 2

Aspects of French speaking society – diversity, the marginalised, criminals

Political life in the French speaking world – teenagers, strikes, immigration

Study of a book or play

Research on a topic of your own choice

Grammar and vocabulary

How will I be assessed?

Exams are at the end of the second year

Paper 1: Listening, reading and translation (50% of marks)

Paper 2: Essay each on the film and book/play (20% of marks)

Oral: discussion of one of the above themes and your research topic (30% of marks)

Career paths:

Languages will enhance any career which operates on an international basis e.g. business, law, sport, culture and science. In fact it can enhance virtually every career.

For further information please contact: Miss Dixon hdixonL@southwolds.uk





Geography

Geography

Qualification studied for: A Level

Length of course: Two years

Examining body: AQA

Entry requirements to this course: A minimum of Grade 6 in GCSE Geography is desirable.

Please note students are expected by the exam board to attend 4 days of fieldwork; this is an advance notice that the course fieldtrip charge will total approximately £250 across the two years. This will involve a three day residential trip (to explore coastal landscapes) and a 1 day trip to a city; these trips will form 20% of the final assessed grade.

What will I study?

You will study a range of contemporary human and physical topics and explore the complex inter-relationships between them. Topics include atmospheric and tectonic hazards, changing coasts, population and migration issues, global governance, water and carbon cycles and finally the concept of changing places and spaces. Two compulsory fieldtrips will be run to prepare students for their exams and their assessed written project, develop their analytical skills and to develop their ability to work as part of a team.

How will I be assessed?

Exam 1: (40%) 2 hours and 30 minutes. 120 marks. Topics: Coasts, Water and carbon cycle and Hazards.

Exam 2: (40%) 2 hours and 30 minutes. 120 marks. Topics: Global Groupings and Governance, Place and Population.

Fieldwork Project: (20%). 60 marks. 3000-4000 words marked by teacher and moderated by AQA.

Career paths:

According to data released in the recent What do graduates do? 2023 report (produced by Prospects and AGCAS) it was highlighted that fifteen months after graduating, human geographers came joint first for being in full time employment and physical geographers were second to chemistry for the physical sciences. This has led the Royal Geographic Society to comment that 'there is no such thing as a geography job; rather there are multiple jobs that geographers do'. Employment areas directly linked to geography include: working in consultancy, planning, tourism, environmental organisations, local/regional/national government, NGOs, teaching management and finance. Most importantly your teachers are enthusiastic about teaching you geography and we hope you enjoy learning and exploring places with us!

For further information please contact: Mrs Martin cmartin@southwolds.uk





German

German

Qualification studied for: A Level

Length of course: Two years

Examining body: AQA

Entry requirements to this course: You need to be predicted at least a Grade 6 in German, if you achieve a Grade 5 in the results please talk to your German teacher.

What will I study?

Year 1

Aspects of German speaking society – family, cyber society, youth culture

Artistic culture in the German speaking world – festivals, art, cultural life in Berlin

Study of a film

Grammar and vocabulary

Year 2

Multiculturalism in German speaking society – immigration, integration, racism

Political life in the German speaking world – the EU, youth, reunification

Study of a book or play

Research on a topic of your own choice

Grammar and vocabulary

How will I be assessed?

Exams are at the end of the second year

Paper 1: Listening, reading and translation (50% of marks)

Paper 2: Essay each on the film and book/ play (20% of marks)

Oral: discussion of one of the above themes and your research topic (30% of marks)

Career paths:

Languages will enhance any career which operates on an international basis e.g. business, law, sport, culture and science. In fact it can enhance virtually every career.

For further information please contact: Mrs Pabari kpabari@southwolds.uk





History

History

Qualification studied for: A Level

Length of course: Two years

Examining body: AQA

Entry requirements to this course: At least a Grade 6 in GCSE History is desirable or if History has not been studied at GCSE Level, at least a Grade 6 in English is desirable. A Level History is a great but demanding course. A good level of literacy is required alongside an ability to write at length and an enthusiasm to read widely and independently.

What will I study?

Year 1 Topics:

The Russian Revolution and the Rise of Stalin 1917 - 1929

This topic looks at the February and October Revolutions in 1917, the establishment of the Communist state and how Stalin rose to power.

Consolidation of the Tudor Dynasty: England 1485 - 1547

This topic looks at the reigns of Henry VII and Henry VIII and the issues of power, authority and society.

Year 2 Topics:

Stalin's Rule, 1929 - 1953

This topic looks at economy and society, 1929-41 (industrialisation, collectivisation and the cult of Stalin; Stalinism, politics and control 1929 - 41 and the Great Patriotic War and Stalin's dictatorship, 1941 -53.

England: Turmoil and Triumph 1547 - 1603

This topic looks at instability and consolidation and if there was a mid-Tudor crisis during the reigns of Edward VI and Mary Tudor before looking at the triumph of Elizabeth I.

Coursework:

Civil Rights in the USA

Students complete a 3500 word essay looking at change over a 100-year period; e.g. how the social, legal, political or economic status of African Americans changed between 1860 and 1970. There will be a short taught course followed by an independent investigation task.

How will I be assessed?

Russia exam (40%) - All Year 1 and Year 2 topics are assessed in this exam. Students answer one source based question and two essay questions.

Tudor exam (40%) - All Year 1 and Year 2 topics are assessed in this exam. Students answer one source based question and two essay questions.

Coursework (20%) - Students complete a 3500 word essay.

Career paths:

History A Level is very well respected by employers and universities and students with A Level History go on to study a wide range of subjects at university. Students with A Level History have skills in independent research, note making, presentation of research and decision making. They can reach considered judgements based on evidence, form and challenge opinions, appraise a wide range of sources and write clear and cogent essays. So, History is an ideal and important basis of any career. Skills are so varied that many employers actively encourage History graduates because of their ability to think logically and laterally at the same time.

For further information please contact: Mr Addis iaddis@southwolds.uk





Maths

Maths

Qualification studied for: A Level

Length of course: Two years

Examining body: Edexcel

Entry requirements to this course: A Grade 6 in GCSE Maths is the minimum requirement, however a Grade 7 is desirable.

What will I study?

All students will study topics from Pure mathematics, Mechanics and Statistics and there will also be links within the topics which are assessed through problem solving questions.

The course is made up of:

Algebra and Functions

Proof

Coordinate Geometry

Trigonometry

Exponentials and Logarithms

Differentiation and Integration

Numerical Methods

Vectors

Statistical sampling

Use of data in statistics

Probability

Statistical distributions and hypothesis testing

Quantities and units in Mechanics

Kinematics

Forces and Newton's laws

Moments

How will I be assessed?

In total there will be 3 exams of 2 hours each in Year 2

66.6% Pure mathematics - this will be assessed by 2 exams of 2 hours each

16.6% Mechanics -this will be assessed by 1 exam of 1 hour

16.6% Statistics -this will be assessed by 1 exam of 1 hour

Career paths:

Maths A level is a desirable Qualification for all courses and possible future careers include:

Engineering, Accounting, Actuary, Banking and Finance, Computing, Marketing, Medical Statistics, Mathematical Biologists, Logistics, Government agencies including MI5 and the Ministry of Defence.

For further information please contact: mathsdept@southwolds.uk





Core Maths

Core Maths

Qualification studied for: AS Level

Length of course: Two years

Examining body: AQA

Entry requirements to this course: At least a Grade 4 in GCSE Maths

What will I study?

You will study problem solving in the context of statistics and finance.

Core Maths has been designed to maintain and develop real-life skills. What you study is not purely theoretical or abstract; it can be applied on a day to day basis in work, study or life and the course includes a financial Maths element. Core Maths will also help with other A Level subjects in particular with Science, Geography, Business Studies, Psychology and Economics. The skills developed in the study of Maths are increasingly important in the workplace and in higher education; studying Core Maths will help you keep up these essential skills. On average, students who study Maths after GCSE improve their career choices and increase their earning prospects.

The course is made up of:

Analysis of data

Maths for personal finance

Estimation

Critical analysis of given data and models (including spreadsheets and tabular data)

The normal distribution

Probabilities and estimation

Correlation and regression

How will I be assessed?

At the end of the year there will be two papers each 1.5 hours long and worth 60 marks. You will require a scientific or graphical calculator

Career paths:

Core Maths has been designed alongside employers to develop mathematical knowledge and skills which they will require in further study, life and employment. Core Maths supports Psychology, Sciences and Geography related careers as well as technical and vocational studies.

For further information please contact: mathsdept@southwolds.uk





Further Maths

Further Maths

Qualification studied for: A Level

Length of course: Two years

Examining body: Edexcel

Entry requirements to this course: A Grade 7 in GCSE Maths is the minimum requirement, however a Grade 8 is highly desirable.

What will I study?

All students will study topics from Pure mathematics, Mechanics and Decision Mathematics and there will also be links within the topics which are assessed through problem solving questions.

The course is made up of:

50% of the content is compulsory and covers the following topic areas:

Matrices

Proof

Complex Numbers

Further algebra and functions

Further calculus

Further vectors

Polar coordinates

Hyperbolic functions

Differential Equations

The remaining 50% will come from topics within Further Pure Mathematics, Mechanics and Decision maths.

How will I be assessed?

In total there will be 3 exams of 2 hours each in Year 2

50% Further Core Pure mathematics - this will be assessed by 2 exams of 1.5 hours each

50% chosen from 2 modules on Further Pure mathematics, Decision Maths or Mechanics - this will be assessed by 2 exams of 1.5 hours each

Career paths:

Further Maths A level is a desirable qualification for all courses and possible future careers include: Engineering, Accounting, Actuary, Banking and Finance, Computing, Marketing, Medical Statistics, Mathematical Biologists, Logistics, Government agencies including MI5 and the Ministry of Defence.

For further information please contact: mathsdept@southwolds.uk





Music A Level

Music A Level

Qualification studied for: A Level

Length of course: Two years

Examining body: WJEC

Entry requirements to this course: A GCSE or BTEC Level 2 in Music. Applications from students without these qualifications will be considered if students have a good level of musical ability on an instrument or voice.

What will I study and how will I be assessed?

Learners must choose either Option A in Components 1 and 2, or Option B in both Components 1 and 2.

Component 1: Performing – Options A or B

Non-exam assessment: externally assessed by a visiting examiner.

Option A (35%) Total performance duration: 10–12 minutes

Option B (25%) Total performance duration: 6–8 minutes

Component 2: Composing – Options A or B

Non-exam assessment: externally assessed by WJEC Eduqas.

Option A (25%) Total duration of compositions: 8 – 10 minutes

Option B (35%) Total duration of compositions: 4 – 6 minutes

The written examination (40%) focuses on three areas of study.

Area of study A: The Western Classical Tradition covering The Development of the Symphony, 1750 – 1900.

The second area of study is selected from:

Area of study B: Rock and Pop (1960-2000)

Area of study C: Musical Theatre (Rodgers, Bernstein, Sondheim Schonberg, Lloyd Webber and Schwartz)

Area of study D: Jazz (1920-1960)

The third area of study is selected from:

Area of study E: Into the 20th Century

Area of study F: Into the 21st Century

Career paths:

Students completing A Level Music could go on to study music or another subject at university or music college. They could also go directly into employment in various jobs within the music industry. A Level Music offers a wide range of transferable skills into a wide range of other employment routes.

For further information please contact: Mr Manning tmanning@southwolds.uk





Music – BTEC Level 3

Music – BTEC Level 3

Qualification studied for: Music – BTEC Level 3

Length of course: Two years

Examining body: Edexcel

Entry requirements to this course: A GCSE or BTEC Level 2 in Music. Applications from students without these qualifications will be considered if students have a good level of musical ability on an instrument or voice.

What will I study?

There are different courses in this qualification depending on your interests. These are performing, composing, music technology (events support), music technology (DJ technology) and music technology (production). There are a range of units to choose from which you can tailor to your abilities and interests.

How will I be assessed?

Assessment is entirely through coursework. Six units will be completed over two years.

Career paths:

Students completing BTEC Level 3 Music could go on to study music or another subject at university or music college. They could also go directly into employment in various jobs within the music industry. BTEC Level 3 Music offers a wide range of transferable skills into a wide range of other employment routes.

For further information please contact: Mr Manning tmanning@southwolds.uk



Philosophy

Qualification studied for: A Level

Length of course: Two years

Examining body: OCR

Entry requirements to this course: A Grade 6 or higher in Philosophy and Ethics at GCSE or at least a grade 6 in English.

What will I study?

The course is split into 3 sections:

Philosophy: You will study the views of a range of philosophers such as Plato, Aristotle, Thomas Aquinas, William Paley, Immanuel Kant and Ludwig Wittgenstein. We will look at their arguments which relate to the nature of reality, the soul, mind and body, the existence of God, the problem of evil and the meaning of religious language.

Ethics: Where you will study key ethical theories including Kantian Ethics and Utilitarianism. You will also get to explore contemporary moral issues including sexual ethics, medical ethics and business ethics. We will also look at the origins and the role of conscience and so Philosophy and Ethics works well in combination with other subjects such as Psychology, Business and Biology.

Religious developments: The religion we focus on is Christianity and we will focus on the philosophies of Augustine, Aquinas, Hick, Calvin and Mary Daly. We will discuss human nature and whether humans are broken, whether belief in the afterlife can be defended, whether Christian theology is fundamentally sexist and whether it is morally acceptable for Christians to disobey unjust authorities.

How will I be assessed?

There will be three 2 hour exams at the end of Year 13, each paper is worth 33.3%

Career paths:

Career paths in philosophy are diverse. We have past students who are now working within philosophy departments at university level, some go on to work in education, many study Law or PPE, others move into the creative arts and many find their qualifications useful in the business industry. The NHS also seeks to employ philosophy graduates as clinical ethicists or to work within medical ethics committees. The critical thinking skills you develop are invaluable for positions in management and your ability to empathise will be sought after in many public facing roles such as social worker, counsellor or working for the police. You will also be taught how to write high quality academic essays which will be incredibly useful if you intend on applying to University.

For further information please contact: Mr Lloyd alloyd@southwolds.uk





Physical Education

Physical Education

Qualification studied for: A Level

Length of course: Two years

Examining body: OCR

Entry requirements to this course: A Grade 6 or above in GCSE Physical Education and/or a 6 or above in GCSE Science is desirable to follow this course.

What will I study?

- Component 01 Physiological factors affecting performance
 - 1.1 Applied anatomy and physiology
 - 1.2 Exercise physiology
 - 1.3 Biomechanics
- Component 02 Psychological factors affecting performance
 - 2.1 Skill acquisition
 - 2.2 Sports psychology
- Component 03 Socio-cultural issues in physical activity and sport
 - 3.1 Sport and Society
 - 3.2 Contemporary issues in physical activity and sport
- Component 04 Performance in physical education (NEA)
 - 4.1 Performance or coaching of an activity taken from the approved lists
 - 4.2 The Evaluation and Analysis of Performance for Improvement (EAPI)

How will I be assessed?

- Paper 1 Physiological factors affecting performance, two hours written paper; Applied anatomy and physiology, Exercise physiology, Biomechanics
 - Paper 2 Psychological factors affecting performance, one hour written paper; Skill acquisition, sports psychology,
 - Paper 3 Socio-cultural issues in physical activity and sport, one hour written paper; Sport and society, Contemporary issues in physical activity and sport.
- Performance in Physical Education Non-exam assessment (NEA) Performance or Coaching in one chosen activity and an Evaluation and Analysis of Performance for Improvement (EAPI).

Career paths:

The specifications provide a suitable foundation for specialist study on both Physical Education and Sports Studies in higher education and also suitable qualifications for other areas of study. The specifications provide an excellent foundation for candidates intending to pursue careers in teaching and coaching, physiotherapy, radiotherapy, sports development, the leisure industry, recreational management, health leisure and fitness and professional sport.

For further information please contact: Ms Smith msmith@southwolds.uk





Physics

Physics

Qualification studied for: A Level

Length of course: Two years

Examining body: AQA

Entry requirements to this course: A minimum of a Grade 6 in either GCSE Science Trilogy or GCSE Physics, plus a minimum of a Grade 6 in GCSE Maths.

What will I study?

Year 1

- | | |
|---|-------------------------------|
| 1 | Measurements and their errors |
| 2 | Particles and Radiation |
| 3 | Waves |
| 4 | Mechanics and Materials |
| 5 | Electricity |

Year 2

- | | |
|---|---------------------------------------|
| 6 | Further Mechanics and Thermal Physics |
| 7 | Fields and their consequences |
| 8 | Nuclear Physics |
| 9 | Astrophysics (option) |

How will I be assessed?

At the end of year 2 you will be required to sit three exams (two hours long):

Paper 1: Sections 1-5 and 6.1 (Periodic motion)

Paper 2: Section 6.2 (Thermal physics), 7 and 8 (Assumed knowledge from sections 1- 6.1)

Paper 3: Section A: Compulsory section: Practical skills and data analysis and Section B:

Students enter for one of sections 9, 10, 11, 12 or 13

There is also a Practical Endorsement Award, a separate qualification to Physics A Level, in which your teacher will assess you over the two year course.

Career paths:

Physics has relevance in a wide range of careers including most forms of engineering, architecture, dentistry, medicine, pharmacy, journalism, industrial designing, RAF, meteorology, the city financial services sector, telecommunications, optician, the secret service, government, the games industry and a wide range of technical and scientific jobs. Physics is widely recognised by universities as being a 'facilitating' subject – this means that it is useful across a wide range of university courses.

Physics will help you to build up your problem solving, research, and analytical skills – vital skills for study and most career paths.

It is strongly recommended that you take A Level Maths alongside A Level Physics.

For further information please contact: Mr Scragg bscragg@southwolds.uk





Politics

Politics

Qualification studied for: A Level

Length of course: Two years

Examining body: Edexcel

Entry requirements to this course: A minimum of a Grade 6 in English or a Humanities subject is desirable. A willingness to be involved in discussion is a must.

What will I study?

A-Level Politics enables students to develop their critical thinking skills and enhance their ability to interpret, evaluate and comment on the nature of politics.

- **UK politics:** Students will investigate in detail how people and politics interact. They will explore the emergence and development of the UK's democratic system and the similarities, differences, connections and parallels between direct and indirect democracy. They will focus on the role and scope of political parties that are so central to contemporary politics, including the significance of the manifestos they publish at election time and their relevance to the mandate of the resulting government.
- **UK Government:** This component is fundamental to understanding the nature of the UK government, since it enables students to understand where, how and by whom political decisions are made. The component also gives students a base of comparison to other political systems. It further introduces students to the specific roles and powers of the different major branches of the government – legislative, executive and judiciary – as well as the relationships and balance of power between them, and considers where sovereignty now lies within this system.
- **Core and Non-core Ideologies:** Students will also look at the three core ideologies of liberalism, conservatism and socialism and the non-core ideology of Nationalism. In this unit students will study the historical backgrounds of these ideologies and how they became the dominant ideologies in politics today.
- **US Politics:** Students will complete a comparative module on the US political system comparing how things are done in America with the UK. We study the Electoral systems, the power of the President and how laws are made and challenged.

How will I be assessed?

3 x 2-hour exam papers which are equally weighted. (33.3%)

Career paths:

This course is particularly suitable for students who have studied English, History, Business, Economics and Sociology. It may also appeal to students who wish to study Politics, History or any Arts and humanities subject at a higher level. It will also challenge your ability to discuss and argue a viewpoint, especially difficult when it is not one you personally share.

For further information please contact: Mr Addis iaddis@southwolds.uk



Product Design (3D)

Qualification studied for: A Level

Length of course: Two years

Examining body: AQA

Entry requirements to this course: GCSE in Product Design or Textiles at Grade 5 or above. An interest in Art and/or ICT is also beneficial.

What will I study?

We live in a consumer society and the design and manufacture of products is a multi billion pound industry. People use hundreds of different products everyday from a toothbrush when you wake up, a toaster for breakfast, microwave for lunch, sofa to flop out on and mobile phone to contact friends; the list is never ending.

The course focuses on developing an understanding of: Why products look the way they do? What makes people want to buy products? How do products effect the environment? What are products made from and why has this material been selected? How have products been made and why have they been made that way?

How will I be assessed?

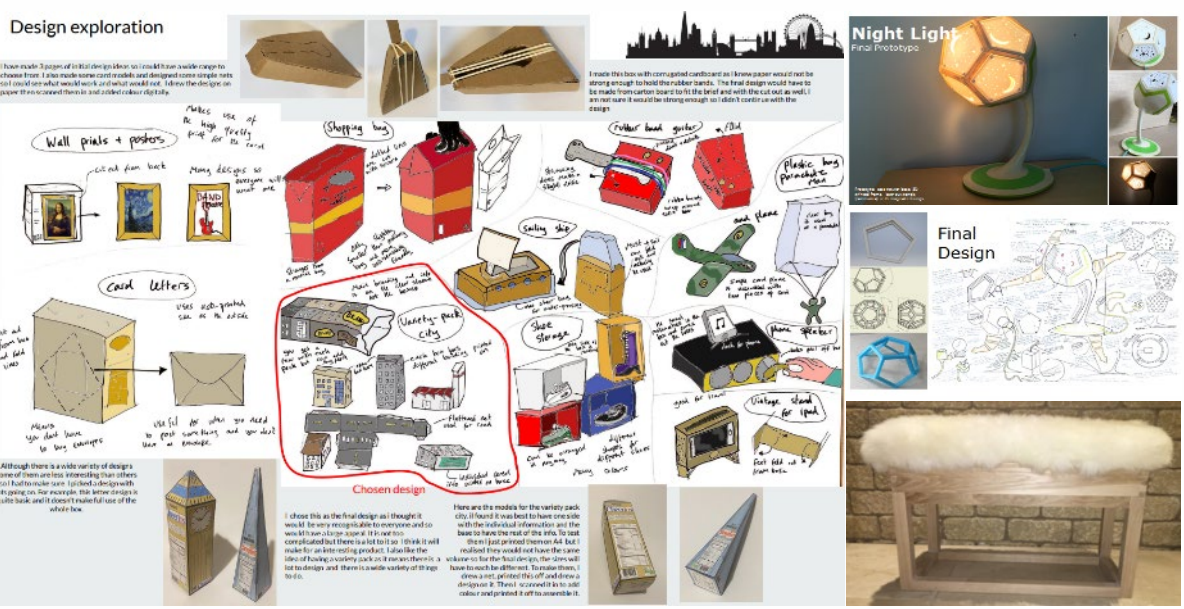
The course is 50% coursework and 50% examination. In year 1 you will complete several short projects using a variety of materials to help build your subject knowledge and practical skills. In year 2 you will complete one coursework project on a subject of your choice. Practical outcomes for the year 2 project have included: architectural models, prosthetic limbs, gym training aid, children's educational computer (prototype), football shin pads and furniture. Your final product can be made from virtually any material including: plastics, card, wood, metal, fabric, resin block or whatever is most suitable for the product that you design.

Career paths:

This course is for people who are interested in the design of products. The course covers a broad base of skills relating to many different subjects. Future careers could include: Architect, Consumer Researcher, Engineer, Ergonomist, Graphic Designer, Interior Designer, Marketing and Advertising, Medical Product Design, Product Designer, Sustainable Designer, Tester, Textile Designer, Web Designer or any career with links to design, manufacture or consumption of products.

For further information please contact: Ms Aston saston@southwolds.uk

Design exploration



Night Light Final Prototype

Shopping bag

Wall prints + posters

Card letters

Chosen design

Final Design

Be kind Work hard Aspire



Psychology

Psychology

Qualification studied for: A Level

Length of course: Two years

Examining body: Edexcel

Entry requirements to this course: It is desirable that students have at least a Grade 5 in Maths, because of the statistical content in the course, and at least a Grade 6 in another humanities course to prepare them for the essay writing and critical debate. At least a Grade 6 in a Science would also be helpful for the research and experimental aspects of the course.

What will I study?

In the first year students study four approaches (Social, Cognitive, Biological and Learning) to gain a foundation in psychology. Topics include obedience, prejudice, memory and the brain. In the second year students then go on to do Clinical Psychology, which is the study of mental health disorders and treatments, and Criminal Psychology, which is the study of criminality, courtroom psychology and treatment programmes.

How will I be assessed?

There is no coursework or controlled assessment in psychology, it is 100% exam. There are three exams (two hours long). All are in June. Assessment comes in the form of short and medium answer questions and one essay per topic.

Career paths:

Psychology is the study of human behaviour. It therefore feeds into most careers where an understanding of people and their behaviour is required. Specific examples include teaching, counselling, social work, nursing, medicine, marketing, advertising and the police.

For further information please contact: Mrs Capewell jcapewell@southwolds.uk





Spanish

Spanish

Qualification studied for: A Level

Length of course: Two years

Examining body: AQA

Entry requirements to this course: You need to be predicted at least a Grade 6 in Spanish, if you achieve a Grade 5 in the results please talk to your Spanish teacher.

What will I study?

Year 1

Aspects of Spanish speaking society – modern and traditional values, cyber society, equal rights

Artistic culture in the Spanish speaking world – idols, regions, cultural heritage

Study of a film

Grammar and vocabulary

Year 2

Multiculturalism in Spanish speaking society – immigration, integration, racism

Political life in the Spanish speaking world – youth, monarchy and republic, popular movements

Study of a book or play

Research on a topic of your own choice

Grammar and vocabulary

How will I be assessed?

Exams are at the end of the second year

Paper 1: Listening, reading and translation (50% of marks)

Paper 2: Essay each on the film and book/ play (20% of marks)

Oral: discussion of one of the above themes and your research topic (30% of marks)

Career paths:

Languages will enhance any career which operates on an international basis e.g. business, law, sport, culture and science. In fact it can enhance virtually every career.

oFor further information please contact: Miss Dixon hdixon@southwolds.uk





Sports Leaders

Sports Leaders

Qualification studied for: SLQ Level 2

Length of course: One year

Examining body: Sports Leaders UK

Entry requirements to this course: There are no particular entry requirements but some experience in sports is preferred.

What will I study?

There are four units

- Unit 1: Building leadership skills
- Unit 2: Plan, lead and evaluate sport/physical activity sessions
- Unit 3: Assist in planning and leading a sports/physical activity event
- Unit 4: Lead sport/physical activity sessions in your community – 10 hours

How will I be assessed?

- Two assessed sessions
- Observation of a role within a sporting event
- Completion of the sports leaders booklet

Career paths:

The Sports Leaders qualification will assist in further qualifications in sports coaching, leadership or teaching and also the employability skills gained are transferable to many different careers.

For further information please contact: Miss Drewitt gdrewitt@southwolds.uk





East Midlands
Education Trust



Head Teacher: Halina Angus
Deputy Head Teachers : Sarah Brooks and Carol Shardlow

The South Wolds Academy & Sixth Form
Church Drive, Keyworth, Nottingham NG12 5FF
e-mail: office@southwolds.uk
Website: www.southwolds.co.uk
Twitter: @SouthWolds Telephone: 0115 9373506
www.facebook.com/SouthWoldsAcademy

